



**Popular Lady**

The Painted Lady (*Vanessa cardui*) is considered the most widely distributed butterfly in the world. The dark areas in map to the right show some areas its habitation have been confirmed.



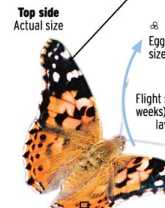
**Route:** North to Northwest in lower elevations



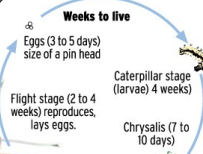
**Underside**  
Actual size

**Mysterious Lady**  
Scientist are still looking for answers why Painted Ladies wait to migrate, and why they don't return.

**Two ladies in one**  
Difference in color and diagram of the top and the bottom give multiple ways to hide from predators.



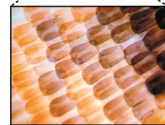
**Top side**  
Actual size



**A lot of ladies**  
Painted Lady larvae feed on a greater variety of plants than other butterflies.

**Liquid diet**  
Adults don't eat, they only drink the nectar in certain flowers.

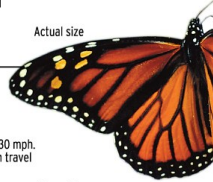
**Microscopic beauties**  
The Painted Lady's wings are made of millions of tiny scales. Their light and firm wings work when warm. Most butterflies can't fly unless their body temperature rises to 86 degrees.



**Identity theft**

The local swarms of Painted Ladies are often confused with the yearly migrating Monarch Butterfly.

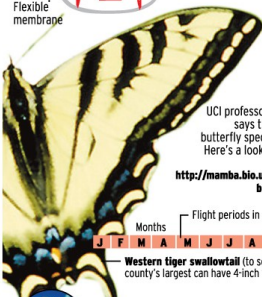
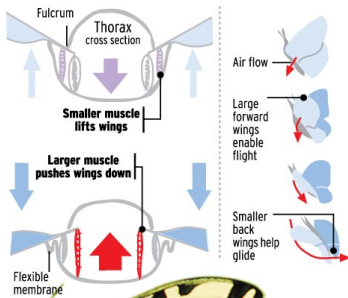
Monarchs are much larger and have a different color scheme.



Actual size

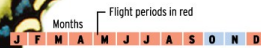
**Flight facts**  
Some species can fly up to 30 mph. Painted Lady butterflies can travel 100 miles in a day.

**How they fly**

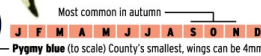


**Other locals to look for**

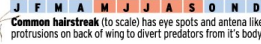
UCI professor Dr. Peter Bryant says there are about 90 butterfly species in the county. Here's a look at a few from his database at: <http://mamba.bio.ucl.edu/~pbryant/biodiv/bflyplnt.htm>



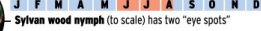
**Western tiger swallowtail** (to scale) One of county's largest can have 4-inch wings



**Pygmy blue** (to scale) County's smallest, wings can be 4mm.



**Common hairstreak** (to scale) has eye spots and antenna like protrusions on back of wing to divert predators from it's body.



**Sylvan wood nymph** (to scale) has two "eye spots"

**Around town**

July 4th is the county's annual butterfly count at Upper Newport Bay. It is organized by the North American Butterfly Association. To learn more go to: [www.naba.org](http://www.naba.org)

Sources: Dr. Peter Bryant, UCI; "Butterflies of Orange County" by Larry J. Orsak; Microscopic image from Scope Tronic; North American Butterfly Association; Peterson Fieldguides, "Western Butterflies"